

# ALLEN

## Activity at the end of December 2023

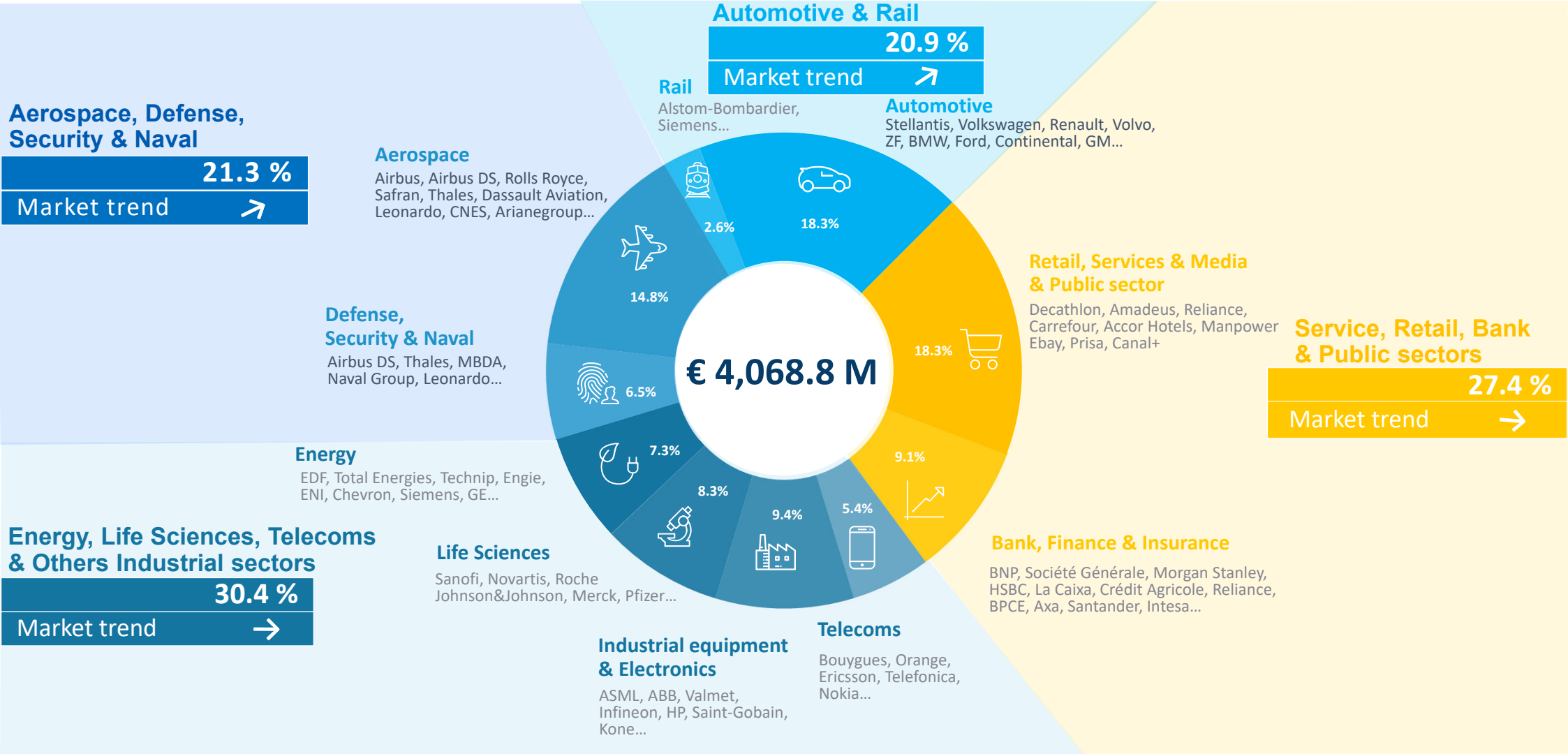


**Bruno Benoliel**  
*Deputy Chief Executive Officer*

Paris, January 25th, 2024



# BREAKDOWN OF TURNOVER PER SECTOR (AS A % OF REVENUE) AS AT DECEMBER 31<sup>ST</sup> 2023





## BREAKDOWN OF TURNOVER PER GEOGRAPHICAL AREA AS AT DECEMBER 31<sup>ST</sup> 2023

COUNTRY	FY				Change			
	2022	%	2023	%	Published	Change in scope	Forex	Organic, excl. Forex effect
<b>FRANCE</b>	<b>1 178.2</b>	<b>31.1%</b>	<b>1 297.9</b>	<b>31.9%</b>	<b>10.2%</b>	<b>0.0%</b>	<b>0.0%</b>	<b>10.2%</b>
IBERIC	323.3	8.5%	371.1	9.1%	14.8%	0.7%	0.0%	14.1%
GERMANY	329.0	8.7%	367.4	9.0%	11.7%	6.5%	0.0%	5.1%
UK	263.2	7.0%	315.2	7.7%	19.8%	13.4%	- 1.5%	7.9%
ITALY	250.2	6.6%	312.2	7.7%	24.8%	0.0%	0.0%	24.8%
BENELUX	198.2	5.2%	227.5	5.6%	14.7%	0.0%	0.0%	14.7%
SCANDINAVIA	183.6	4.9%	179.6	4.4%	- 2.2%	- 0.4%	- 5.4%	3.7%
EASTERN EUROPE	85.6	2.3%	113.5	2.8%	32.6%	13.0%	2.3%	17.4%
SWITZERLAND	66.0	1.7%	61.4	1.5%	- 7.0%	0.0%	3.0%	- 10.0%
<b>EUROPE (W/O FRANCE)</b>	<b>1 699.2</b>	<b>44.9%</b>	<b>1 947.9</b>	<b>47.9%</b>	<b>14.6%</b>	<b>4.0%</b>	<b>- 0.6%</b>	<b>11.2%</b>
<b>NORTH AMERICA</b>	<b>561.6</b>	<b>14.8%</b>	<b>482.9</b>	<b>11.9%</b>	<b>- 14.0%</b>	<b>- 14.3%</b>	<b>- 3.3%</b>	<b>3.6%</b>
<b>ASIA PACIFIC</b>	<b>318.4</b>	<b>8.4%</b>	<b>320.7</b>	<b>7.9%</b>	<b>0.7%</b>	<b>5.2%</b>	<b>- 7.2%</b>	<b>2.7%</b>
OTHERS	25.7	0.7%	19.5	0.5%	- 24.3%	0.0%	- 4.0%	- 20.4%
<b>TOTAL</b>	<b>3 783.1</b>	<b>100.0%</b>	<b>4 068.8</b>	<b>100%</b>	<b>7.6%</b>	<b>- 0.1%</b>	<b>- 1.3%</b>	<b>9.0%</b>



## BREAKDOWN OF TURNOVER PER GEOGRAPHICAL AREA AS AT DECEMBER 31<sup>ST</sup> 2023

COUNTRY	Q4 only				Change			
	2022	%	2023	%	Published	Change in scope	Forex	Organic, excl. Forex effect
<b>FRANCE</b>	<b>300.4</b>	<b>30.0%</b>	<b>334.4</b>	<b>32.4%</b>	<b>11.3%</b>	<b>0.0%</b>	<b>0.0%</b>	<b>11.3%</b>
IBERIC	85.4	8.5%	92.9	9.0%	8.8%	0.0%	0.0%	8.8%
GERMANY	86.6	8.7%	89.4	8.7%	3.3%	7.3%	0.0%	- 4.0%
ITALY	67.5	6.8%	83.4	8.1%	23.6%	0.0%	0.0%	23.6%
UK	83.8	8.4%	75.0	7.3%	- 10.5%	- 9.9%	0.5%	- 1.1%
BENELUX	50.9	5.1%	58.0	5.6%	13.9%	0.0%	0.0%	13.9%
SCANDINAVIA	48.7	4.9%	45.2	4.4%	- 7.1%	- 0.2%	- 3.2%	- 3.7%
EASTERN EUROPE	23.4	2.3%	32.2	3.1%	37.5%	29.0%	4.3%	4.2%
SWITZERLAND	17.3	1.7%	14.9	1.4%	- 14.2%	0.0%	2.5%	- 16.7%
<b>EUROPE (W/O FRANCE)</b>	<b>463.7</b>	<b>46.4%</b>	<b>491.2</b>	<b>47.6%</b>	<b>5.9%</b>	<b>0.9%</b>	<b>0.1%</b>	<b>5.0%</b>
<b>NORTH AMERICA</b>	<b>146.8</b>	<b>14.7%</b>	<b>121.5</b>	<b>11.8%</b>	<b>- 17.2%</b>	<b>- 12.1%</b>	<b>- 4.9%</b>	<b>- 0.1%</b>
<b>ASIA PACIFIC</b>	<b>83.0</b>	<b>8.3%</b>	<b>79.7</b>	<b>7.7%</b>	<b>- 4.0%</b>	<b>2.3%</b>	<b>- 6.5%</b>	<b>0.2%</b>
OTHERS	6.0	0.6%	4.8	0.5%	- 19.2%	0.0%	- 4.8%	- 14.4%
<b>TOTAL</b>	<b>999.9</b>	<b>100.0%</b>	<b>1 031.6</b>	<b>100%</b>	<b>3.2%</b>	<b>- 1.5%</b>	<b>- 1.2%</b>	<b>5.8%</b>



## BREAKDOWN OF TURNOVER PER GEOGRAPHICAL AREA AS AT DECEMBER 31<sup>ST</sup> 2023

COUNTRY	Q1 2023		Q2 2023		Q3 2023		Q4 2023		FY 2023	
	Published	Organic, excl. Forex effect	Published	Organic, excl. Forex effect	Published	Organic, excl. Forex effect	Published	Organic, excl. Forex effect	Published	Organic, excl. Forex effect
<b>FRANCE</b>	<b>12.2%</b>	<b>12.2%</b>	<b>6.7%</b>	<b>6.7%</b>	<b>10.5%</b>	<b>10.5%</b>	<b>11.3%</b>	<b>11.3%</b>	<b>10.2%</b>	<b>10.2%</b>
IBERIC	22.7%	20.0%	14.6%	14.6%	13.6%	13.6%	8.8%	8.8%	14.8%	14.1%
GERMANY	24.5%	18.3%	11.5%	6.6%	9.0%	1.4%	3.3%	- 4.0%	11.7%	5.1%
UK	70.8%	16.3%	65.9%	16.3%	- 5.5%	8.1%	- 10.5%	- 1.1%	19.8%	7.9%
ITALY	27.6%	27.6%	24.7%	24.7%	23.4%	23.4%	23.6%	23.6%	24.8%	24.8%
BENELUX	18.1%	18.1%	12.5%	12.5%	14.5%	14.5%	13.9%	13.9%	14.7%	14.7%
SCANDINAVIA	6.6%	12.3%	- 1.5%	5.4%	- 7.2%	0.5%	- 7.1%	- 3.7%	- 2.2%	3.7%
EASTERN EUROPE	31.1%	34.1%	33.3%	20.3%	28.1%	13.7%	37.5%	4.2%	32.6%	17.4%
SWITZERLAND	0.0%	- 4.3%	- 2.0%	- 6.6%	- 11.2%	- 12.0%	- 14.2%	- 16.7%	- 7.0%	- 10.0%
<b>EUROPE (W/O FRANCE)</b>	<b>26.6%</b>	<b>18.9%</b>	<b>19.8%</b>	<b>12.8%</b>	<b>8.4%</b>	<b>9.4%</b>	<b>5.9%</b>	<b>5.0%</b>	<b>14.6%</b>	<b>11.2%</b>
<b>NORTH AMERICA</b>	<b>- 5.9%</b>	<b>9.8%</b>	<b>- 14.1%</b>	<b>4.3%</b>	<b>- 17.7%</b>	<b>1.3%</b>	<b>- 17.2%</b>	<b>- 0.1%</b>	<b>- 14.0%</b>	<b>3.6%</b>
<b>ASIA PACIFIC</b>	<b>12.1%</b>	<b>7.6%</b>	<b>3.0%</b>	<b>4.0%</b>	<b>- 6.2%</b>	<b>0.0%</b>	<b>- 4.0%</b>	<b>0.2%</b>	<b>0.7%</b>	<b>2.7%</b>
OTHERS	- 14.7%	- 14.4%	- 30.2%	- 26.7%	- 31.5%	- 24.5%	- 19.2%	- 14.4%	- 24.3%	- 20.4%
<b>TOTAL</b>	<b>15.7%</b>	<b>14.4%</b>	<b>8.7%</b>	<b>8.6%</b>	<b>3.3%</b>	<b>7.6%</b>	<b>3.2%</b>	<b>5.8%</b>	<b>7.6%</b>	<b>9.0%</b>

# ALTEN

## Activity at the end of December 2023

### Contact

comfi@alten.fr

<https://www.alten.com/fr/investisseurs/>

T : +33 (0)1.46.08.71.79

40 av. André Morizet  
92513 Boulogne-Billancourt Cedex