

ALTEN

Activity at the end of June 2024





BREAKDOWN OF TURNOVER PER GEOGRAPHICAL AREA AS AT JUNE 30TH 2024

COUNTRY	YTD				Change			
	2023	%	2024	%	Published	Change in scope	Forex	Organic, excl. Forex effect
FRANCE	654.7	32.0%	692.1	32.8%	5.7%	0.0%	0.0%	5.7%
IBERIC	188.6	9.2%	206.4	9.8%	9.4%	1.9%	0.0%	7.5%
ITALY	154.7	7.6%	172.6	8.2%	11.6%	0.0%	0.0%	11.6%
GERMANY	184.1	9.0%	168.7	8.0%	-8,4%	0.3%	0.0%	-8.7%
UK	161.0	7.9%	145.7	6.9%	-9,5%	0.0%	2.3%	-11.8%
BENELUX	114.2	5.6%	116.4	5.5%	1.9%	0.0%	0.0%	1.9%
SCANDINAVIA	96.5	4.7%	87.7	4.2%	-9.2%	0.0%	- 0.3%	-8.8%
EASTERN EUROPE	53.0	2.6%	62.3	3.0%	17.5%	19.6%	3.9%	-6.0%
SWITZERLAND	31.9	1.6%	27.6	1.3%	- 13.4%	0.0%	2.1%	- 15.5%
EUROPE (W/O FRANCE)	984.0	48.0%	987.2	46.8%	0.3%	1.5%	0.6%	-1.8%
NORTH AMERICA	238.7	11.7%	246.6	11.7%	3.3%	4.3%	0.1%	-1.1%
ASIA PACIFIC	160.6	7.8%	173.7	8.2%	8.2%	10.8%	- 4.0%	1.3%
OTHERS	9.9	0.5%	8.3	0.4%	- 16.4%	0.0%	- 2.2%	- 14.1%
TOTAL	2,047.9	100%	2,108.0	100%	2.9%	2.0%	0.0%	0.9%

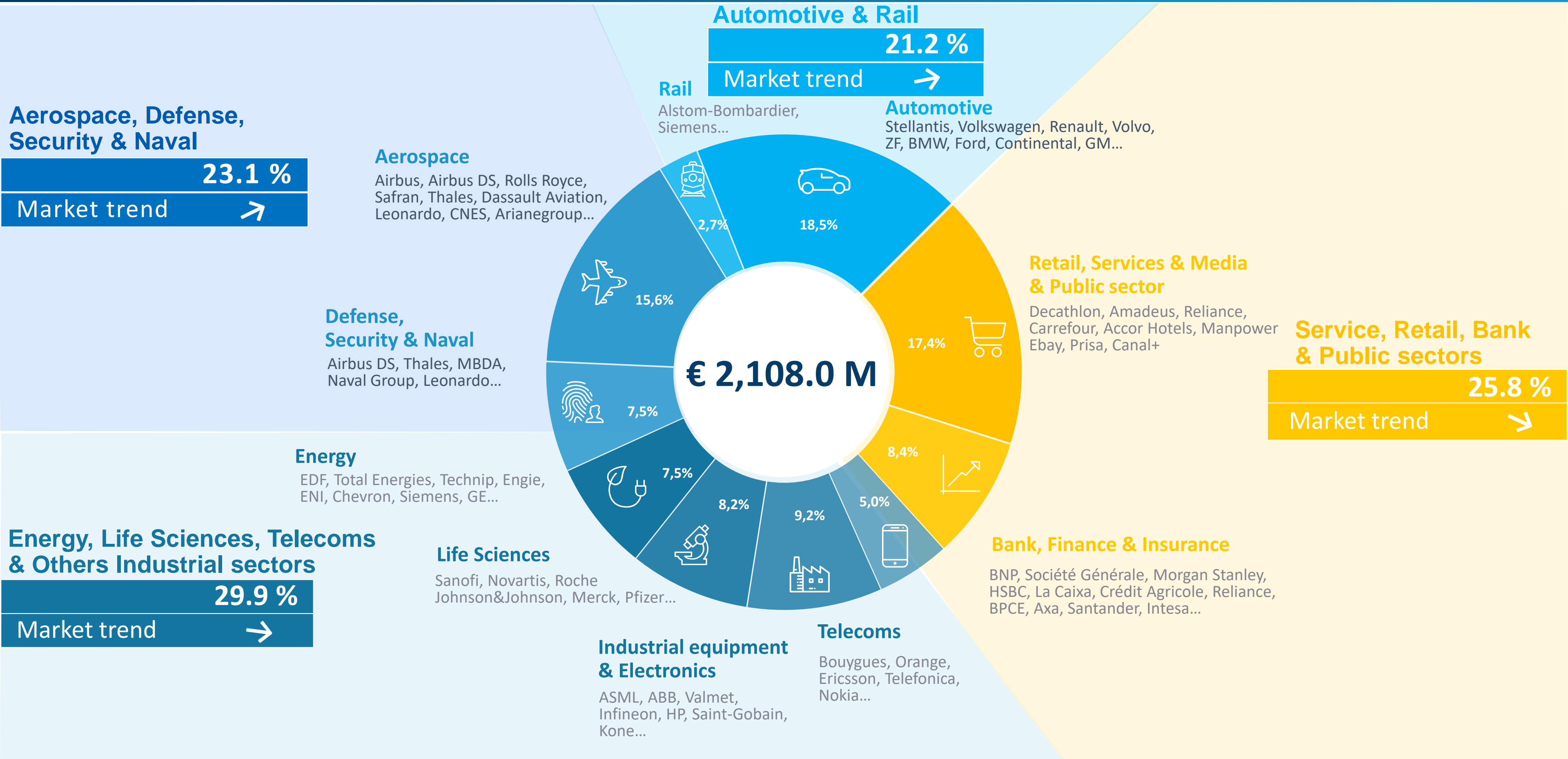
BREAKDOWN OF TURNOVER PER GEOGRAPHICAL AREA AS AT JUNE 30TH 2024

COUNTRY	Q2 only				Change			
	2023	%	2024	%	Published	Change in scope	Forex	Organic, excl. Forex effect
FRANCE	320.3	31.6%	337.6	32.4%	5.4%	0,0%	0.0%	5.4%
IBERIC	94.3	9.3%	105.2	10.1%	11.5%	1.9%	0.0%	9.6%
ITALY	78.5	7.8%	85.8	8.2%	9.4%	0.0%	0.0%	9.4%
GERMANY	90.6	9.0%	82.5	7.9%	- 9.0%	0.3%	0.0%	- 9.3%
UK	79.6	7.9%	72.9	7.0%	- 8.4%	0.0%	1.8%	- 10.2%
BENELUX	55.4	5.5%	56.2	5.4%	1.4%	0.0%	0.0%	1.4%
SCANDINAVIA	46.5	4.6%	41.8	4.0%	- 10.2%	0.0%	- 0.2%	- 10.0%
EASTERN EUROPE	27.2	2.7%	30.0	2.9%	10.5%	14.3%	3.0%	- 6.8%
SWITZERLAND	15.3	1.5%	13.5	1.3%	- 11.6%	0.0%	0.4%	- 12.1%
EUROPE (W/O FRANCE)	487.5	48.1%	487.9	46.9%	0.1%	1.2%	0.5%	- 1.6%
NORTH AMERICA	119.2	11.8%	125.4	12.0%	5.2%	2.9%	0.9%	1.4%
ASIA PACIFIC	80.7	8.0%	85.9	8.3%	6.4%	10.2%	- 2.5%	- 1.3%
OTHERS	4.8	0.5%	4.1	0.4%	- 13.6%	0,0%	- 3.0%	-10,7%
TOTAL	1,012.5	100.0%	1,041.0	100%	2.8%	1.7%	0.1%	1.0%

BREAKDOWN OF TURNOVER PER GEOGRAPHICAL AREA AS AT JUNE 30TH 2024

COUNTRY	Q1 2024		Q2 2024		H1 2024	
	Published	Organic, excl. Forex effect	Published	Organic, excl. Forex effect	Published	Organic, excl. Forex effect
FRANCE	6.0%	6.0%	5.4%	5.4%	5.7%	5.7%
IBERIC	7.4%	5.5%	11.5%	9.6%	9.4%	7.5%
GERMANY	- 7.7%	- 8.0%	- 9.0%	- 9.3%	- 8.4%	- 8.7%
UK	- 10.7%	- 13.4%	- 8.4%	- 10.2%	- 9.5%	- 11.8%
ITALY	13.9%	13.9%	9.4%	9.4%	11.6%	11.6%
BENELUX	2.3%	2.3%	1.4%	1.4%	1.9%	1.9%
SCANDINAVIA	- 8.2%	- 7.8%	- 10.2%	- 10.0%	- 9.2%	- 8.8%
EASTERN EUROPE	25.0%	- 5.2%	10.5%	- 6.8%	17.5%	- 6.0%
SWITZERLAND	- 15.0%	- 18.7%	- 11.6%	- 12.1%	- 13.4%	- 15.5%
EUROPE (W/O FRANCE)	0.6%	- 1.9%	0.1%	- 1.6%	0.3%	- 1.8%
NORTH AMERICA	1.4%	- 3.5%	5.2%	1.4%	3.3%	- 1.1%
ASIA PACIFIC	10.0%	4.0%	6.4%	- 1.3%	8.2%	1.3%
OTHERS	- 18.9%	- 17.4%	- 13.6%	-10,7%	- 16.4%	- 14.1%
TOTAL	3.1%	0.8%	2.8%	1.0%	2.9%	0.9%

BREAKDOWN OF TURNOVER PER SECTOR (AS A % OF REVENUE) AS AT JUNE 30TH 2024



Automotive & Rail

21.2 %

Market trend →

Rail

Alstom-Bombardier, Siemens...

Automotive

Stellantis, Volkswagen, Renault, Volvo, ZF, BMW, Ford, Continental, GM...

Aerospace

Airbus, Airbus DS, Rolls Royce, Safran, Thales, Dassault Aviation, Leonardo, CNES, Arianegroup...

Defense, Security & Naval

Airbus DS, Thales, MBDA, Naval Group, Leonardo...

Energy

EDF, Total Energies, Technip, Engie, ENI, Chevron, Siemens, GE...

Energy, Life Sciences, Telecoms & Others Industrial sectors

29.9 %

Market trend →

Life Sciences

Sanofi, Novartis, Roche Johnson&Johnson, Merck, Pfizer...

Industrial equipment & Electronics

ASML, ABB, Valmet, Infineon, HP, Saint-Gobain, Kone...

Telecoms

Bouygues, Orange, Ericsson, Telefonica, Nokia...

Retail, Services & Media & Public sector

Decathlon, Amadeus, Reliance, Carrefour, Accor Hotels, Manpower Ebay, Prisa, Canal+

Service, Retail, Bank & Public sectors

25.8 %

Market trend →

Bank, Finance & Insurance

BNP, Société Générale, Morgan Stanley, HSBC, La Caixa, Crédit Agricole, Reliance, BPCE, Axa, Santander, Intesa...

ALTEN

Activity at the end of June 2024

Contact

comfi@alten.fr

<https://www.alten.com/fr/investisseurs/>

T : +33 (0)1.46.08.71.79

40 av. André Morizet
92513 Boulogne-Billancourt Cedex

