

ALLEN

Activity at the end of March 2025



Bruno Benoliel
Deputy Chief Executive Officer

Paris, April 24th, 2025



BREAKDOWN OF TURNOVER PER SECTOR (AS A % OF REVENUE) AS AT MARCH 31ST 2025

Aerospace, Defense, Security & Naval

Market trend → 23.0%

Aerospace

Airbus, Airbus DS, Rolls-Royce, Safran, Thales, Dassault Aviation, Leonardo, CNES, ArianeGroup...

Defense, Security & Naval

Airbus DS, Thales, MBDA, Naval Group, Leonardo...

Energy

EDF, Total Energies, Technip, Engie, ENI, Chevron, Siemens, GE...

Energy, Life Sciences & Industrial Equipment

Market trend → 33.0%

Life Sciences

Sanofi, Novartis, Roche, Johnson&Johnson, Merck, Pfizer...

Industrial equipment & Electronics

ASML, ABB, Valmet, Infineon, HP, Saint-Gobain, Kone...

Automotive & Rail

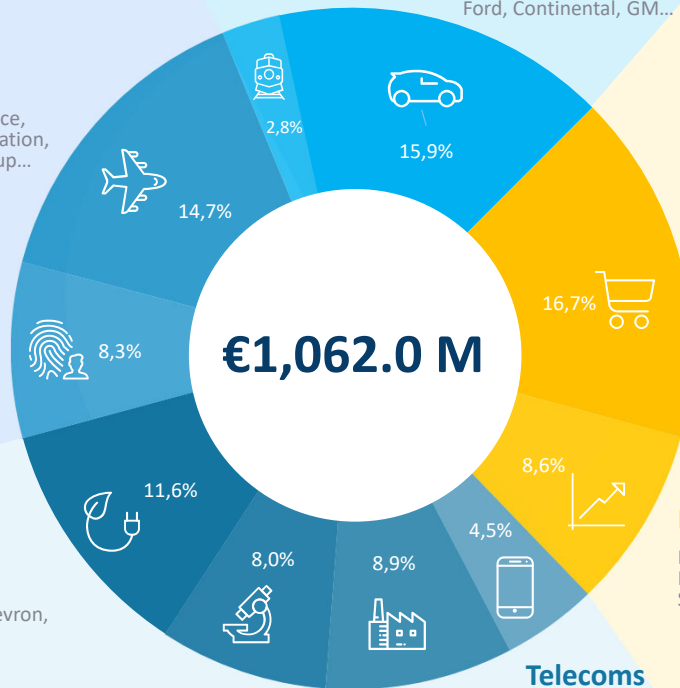
Market trend → 18.7%

Rail

Alstom-Bombardier, Siemens...

Automotive

Stellantis, Volkswagen, Renault, Volvo, ZF, BMW, Ford, Continental, GM...



Retail, Services, Media & Public sector

Decathlon, Amadeus, Carrefour, Accor Hotels, Manpower, Ebay, Prisa, Canal+...

Service, Retail, Bank Media & Public sector

Market trend → 25.3%

Bank, Finance & Insurance

BNP Paribas, Société Générale, Morgan Stanley, HSBC, La Caixa, Crédit Agricole, BPCE, Reliance, Axa, Santander, Intesa...



BREAKDOWN OF TURNOVER PER GEOGRAPHICAL AREA AS AT MARCH 31ST 2025

COUNTRY	YTD				Change			
	2024	%	2025	%	Published	Change in scope	Forex	Organic, excl. Forex effect
FRANCE	354.5	33.2%	369.4	34.8%	4.2%	8.0%	0.0%	- 3.8%
IBERIC	101.2	9.5%	115.7	10.9%	14.4%	7.7%	0.0%	6.7%
ITALY	86.8	8.1%	87.9	8.3%	1.3%	0.0%	0.0%	1.3%
GERMANY	86.2	8.1%	77.0	7.2%	- 10.7%	7.6%	0.0%	- 18.3%
UK	72.7	6.8%	68.4	6.4%	- 6.0%	0.0%	2.3%	- 8.3%
BENELUX	60.1	5.7%	51.7	4.9%	- 14.0%	0.3%	0.0%	- 14.3%
EASTERN EUROPE	32.3	3.0%	36.6	3.4%	13.6%	14.0%	2.2%	- 2.5%
SCANDINAVIA	45.9	4.3%	35.6	3.4%	- 22.5%	0.0%	0.2%	- 22.7%
SWITZERLAND	14.1	1.3%	11.6	1.1%	- 17.9%	0.0%	0.3%	- 18.2%
EUROPE (W/O FRANCE)	499.3	46.8%	484.5	45.6%	- 3.0%	3.8%	0.5%	- 7.3%
NORTH AMERICA	121.2	11.4%	115.6	10.9%	- 4.6%	0.0%	0.8%	- 5.4%
ASIA PACIFIC	87.8	8.2%	86.4	8.1%	- 1.7%	2.8%	0.1%	- 4.6%
OTHERS	4.2	0.4%	6.1	0.6%	48.0%	0.0%	- 0.1%	48.0%
TOTAL	1,067.0	100%	1,062.0	100%	- 0.5%	4.7%	0.3%	- 5.5%

ALTEN

Activity at the end of March 2025

Contact



comfi@alten.fr



www.alten.com/fr/investisseurs



+33 (0)1.46.08.71.79



40 av. André Morizet
92513 Boulogne-Billancourt Cedex

