

ACTIVITY AT THE END OF MARCH 2026

Bruno Benoliel

Deputy Chief Executive Officer

Paris, April 28th 2026



ALLEN

Sensitivity: C1-Internal

BREAKDOWN OF TURNOVER PER SECTOR (AS A % OF REVENUE)

As at March 31st, 2026

Aerospace, Defense, Security & Naval

Market trend → | **26.6%**

Aerospace

Airbus, Airbus DS, Rolls-Royce, Safran, Thales, Dassault Aviation, Leonardo, CNES, Arianegroup...

Defense, Security & Naval

Airbus DS, Thales, MBDA, Naval Group, Leonardo...

Energy

EDF, Total Energies, Technip, Engie, ENI, Chevron, Siemens, GE...

Energy, Life Sciences, Telecoms & Industrial Equipment

Market trend → | **31.2%**

Life Sciences

Sanofi, Novartis, Roche, Johnson&Johnson, Merck, Pfizer...

Industrial equipment & Electronics

ASML, ABB, Valmet, Infineon, HP, Saint-Gobain, Kone...

Automotive & Rail

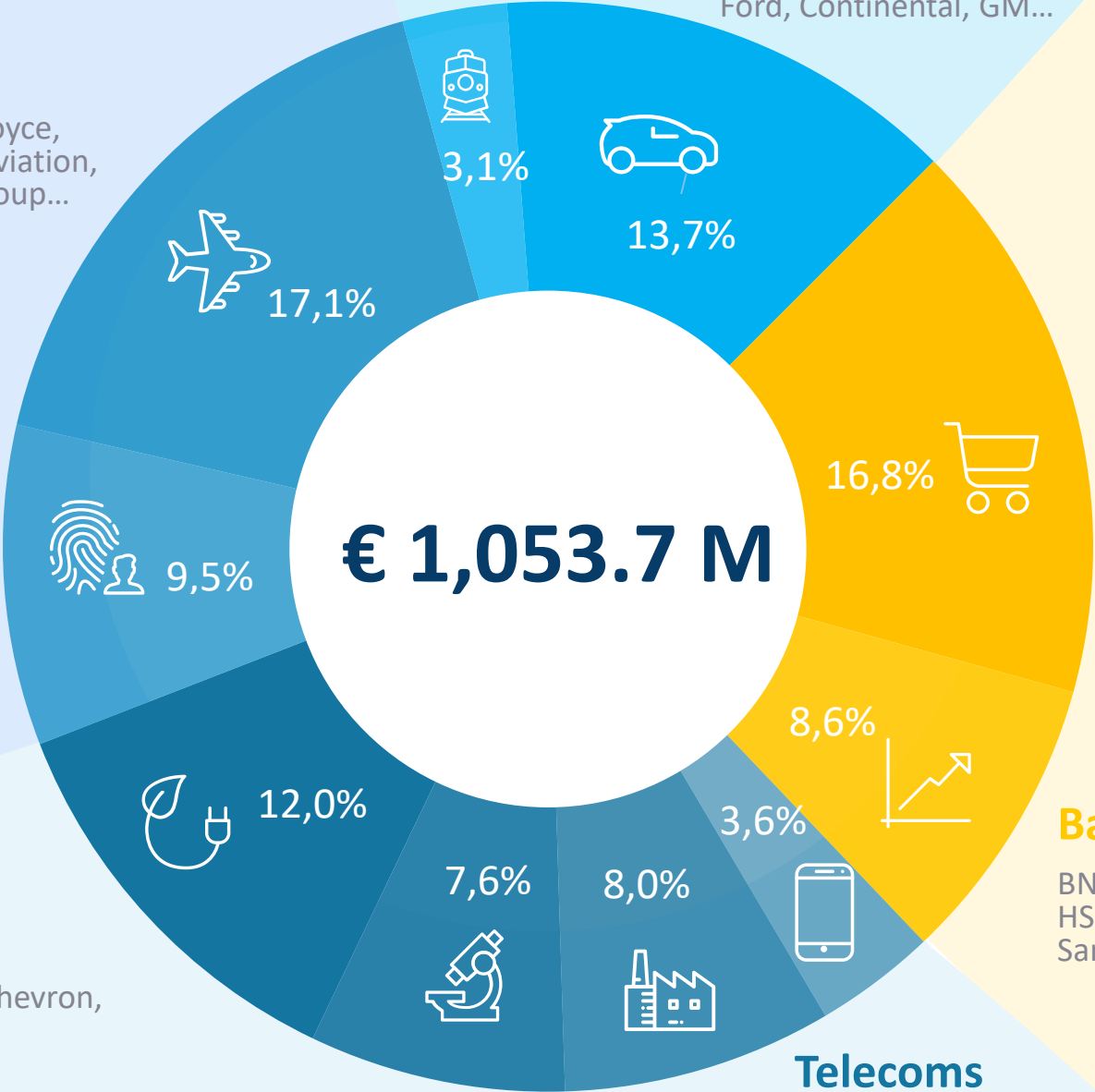
Market trend → | **16.8%**

Rail

Alstom-Bombardier, Siemens...

Automotive

Stellantis, Volkswagen, Renault, Volvo, ZF, BMW, Ford, Continental, GM...



€ 1,053.7 M

Retail, Services, Media & Public sector

Decathlon, Amadeus, Carrefour, Accor Hotels, Manpower, Ebay, Prisa, Canal+...

Service, Retail, Bank Media & Public sector

Market trend → | **25.4%**

Bank, Finance & Insurance

BNP Paribas, Société Générale, Morgan Stanley, HSBC, La Caixa, Crédit Agricole, BPCE, Reliance, Axa, Santander, Intesa...

BREAKDOWN OF TURNOVER PER GEOGRAPHICAL AREA

As at March 31st, 2026

COUNTRY	YTD				Change			
	2025	%	2026	%	Published	Change in scope	Forex	Organic, excl. Forex effect
FRANCE	369.4	34,8%	374.3	35.5%	1.3%	1.0%	0.0%	0.3%
IBERIC	115.7	10.9%	125.9	11.9%	8.8%	2.6%	0.0%	6.2%
ITALY	87.9	8.3%	88.9	8.4%	1.2%	0.0%	0.0%	1.2%
GERMANY	77.0	7.2%	75.2	7.2%	-2,2%	0.0%	0.0%	-2.2%
UK	68.4	6.4%	65.8	6.2%	- 3.8%	0.0%	- 3.8%	0.0%
BENELUX	51.7	4.9%	50.4	4.8%	- 2.6%	0.0%	0.0%	- 2.6%
EASTERN EUROPE	36.6	3.4%	34.2	3.2%	- 6.7%	0.0%	- 1.1%	- 5.6%
NORDICS	35.6	3.4%	31.6	3.0%	- 11.2%	0.0%	3.0%	- 14.2%
EUROPE (W/O FRANCE)	472.9	44.5%	472.0	44.7%	- 0.2%	0.6%	-0.4%	-0.4%
NORTH AMERICA	115.6	10.9%	104.0	9.9%	- 10.1%	2.8%	- 7.8%	- 5.1%
ASIA PACIFIC	86.4	8.1%	81.7	7.8%	- 5.4%	1.3%	- 10.8%	4.0%
OTHERS	17.7	1.7%	21.7	2.1%	22.3%	1.7%	- 5.0%	25.6%
TOTAL	1 062.0	100%	1 053.7	100%	- 0.8%	1.1%	- 2.0%	0.1%

Activity at the end of March 2026


AL TEN


Contact



 comfi@alten.fr
Investor.relations@alten.com

 www.alten.com/investors/

 +33 (0)1.46.08.71.79

 221 bis Boulevard Jean Jaurès
92100 Boulogne-Billancourt Cedex